

BIZINSIGHT FOR INTACCT 1.5.1.0

Release Notes

BizInsight for Intacct 1.5.1.0
July 5, 2016

Copyright Notice

BizNet Software, Inc. makes no representations or warranties with respect to the contents of this document and specifically disclaims any implied warranties of merchantability or fitness for any particular purpose.

We welcome user comments and reserve the right to revise this publication and to make improvements or changes to the products and programs described in this publication at any time without notice.

Mailing Address:

BizNet Software, Inc.
14755 Preston Rd., Suite 800
Dallas, TX 75254

Phone:

1-888-803-5227

Web Site:

www.biznetsoftware.com

© Copyright 2016 by BizNet Software, Inc. All rights reserved.

Printed in the United States of America

No part of this publication may be reproduced in any form without the prior written consent of BizNet Software, Inc.

Trademarks

BizInsight is a registered trademark of BizNet Software, Inc.

Windows and Microsoft Excel are registered trademarks of Microsoft Corp.

All other trademarks are acknowledged.

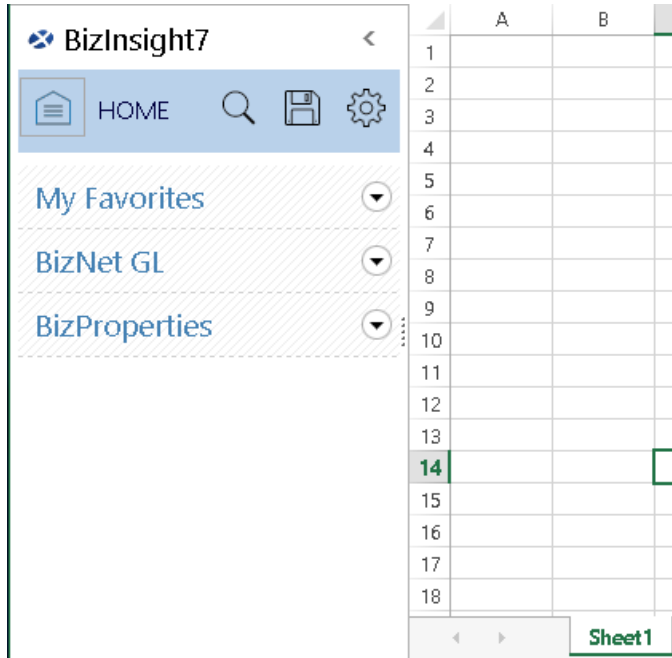
Table of Contents

| | |
|---|-----------|
| I. New Features..... | 4 |
| 1. New Navigation Pane | 4 |
| 2. New BizInsight Ribbon Bar | 4 |
| 3. New Navigation Pane Icons | 6 |
| 4. New BizProperties (Formally Account Definitions) Functions | 6 |
| 5. Support for Expressions | 7 |
| 6. User Friendly Dynamic Tables..... | 7 |
| 9. Smart Data Engine Cache Management..... | 9 |
| 10. New Data Cache Management Right-click options | 10 |
| II. Product Enhancements | 13 |
| 1. Refresh Data Cache Interval..... | 13 |
| 2. Enhanced UI for Check for Errors..... | 14 |
| 3. Start Over Button | 14 |
| 4. Select Columns Reorder..... | 15 |
| III. Issues Resolved..... | 16 |
| IV. Known Issues | 17 |
| V. Best Practices | 19 |

I. New Features

1. New Navigation Pane

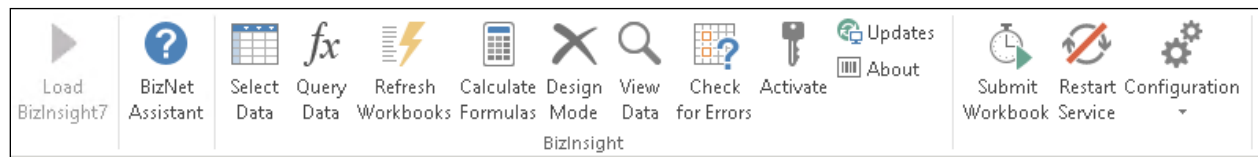
The BizInsight Navigation Pane has been changed and includes enhanced functionality. Users can search the Navigation Pane, save Favorites to it and manage their settings.



For more information on using the new capabilities of the Navigation Pane, refer to the “Navigation Pane” section in the BizInsight 7.2 User Guide.

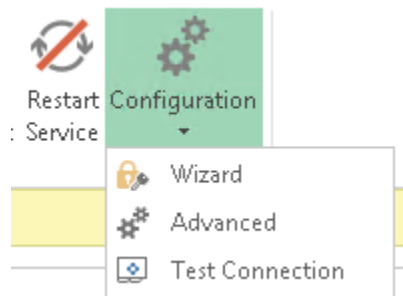
2. New BizInsight Ribbon Bar

The BizInsight ribbon bar has been simplified.



The BizInsight and BizInsight Desktop Edition buttons have been merged into a single BizInsight group.

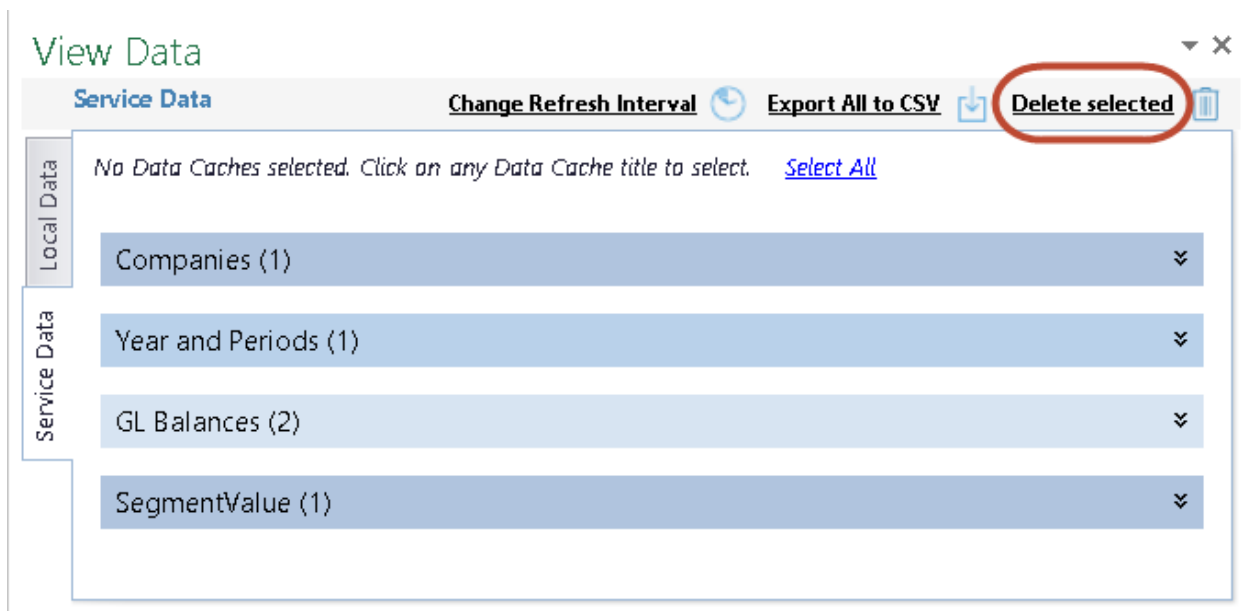
Several BizCloud service buttons have been consolidated under a **Configuration** button.



The Applications Settings button has been removed and those settings can now be accessed from the Navigation Pane.

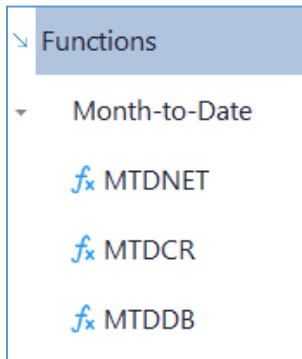


The Flush Cache button has been removed completely. Caches can now be deleted by clicking on the **View Data** button, selecting the cache(s) to delete and clicking **Delete selected**.

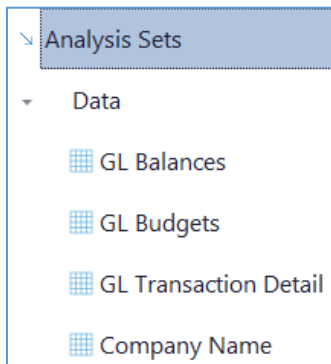


3. New Navigation Pane Icons

The object icons in the Navigation Pane have been updated. Functions now display with an “fx” icon:

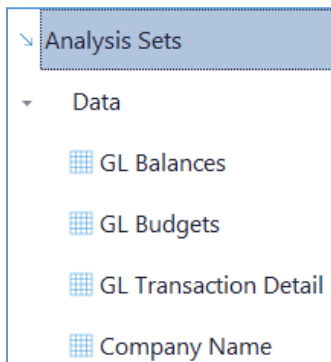


Tables now display a grid icon:



4. New BizProperties (Formally Account Definitions) Functions

BizInsight 7.2 supports new BizProperty functions.

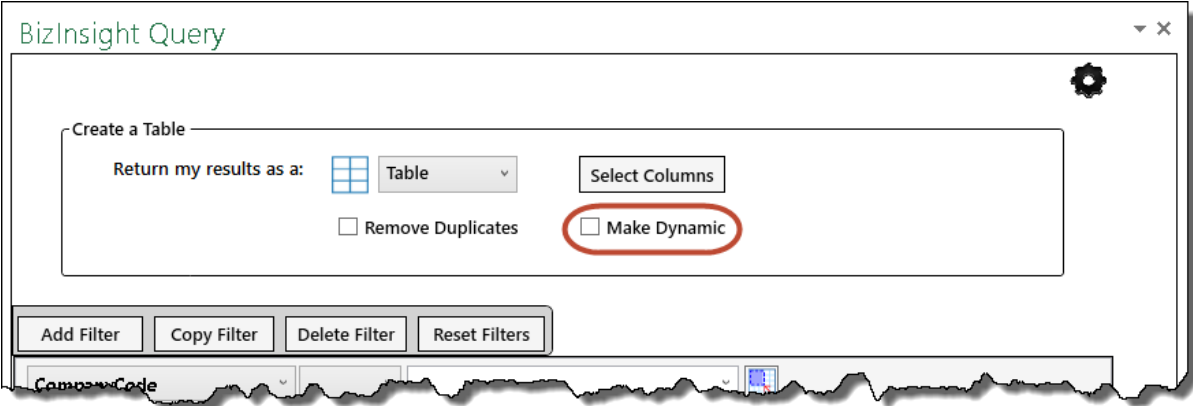


5. Support for Expressions

BizInsight 7.2 now supports expressions and provides a new interface in the Query Data dialog for creating expressions. For more information, see “Expressions” in the User Guide.

6. User Friendly Dynamic Tables

Prior to version 7.2, creating dynamic tables involved several manual steps and the use of Excel’s CONCATENATE() function to combine strings with filter parameter values from cells. In BizInsight 7.2, the View Data dialog has been enhanced to include a **Make Dynamic** checkbox.



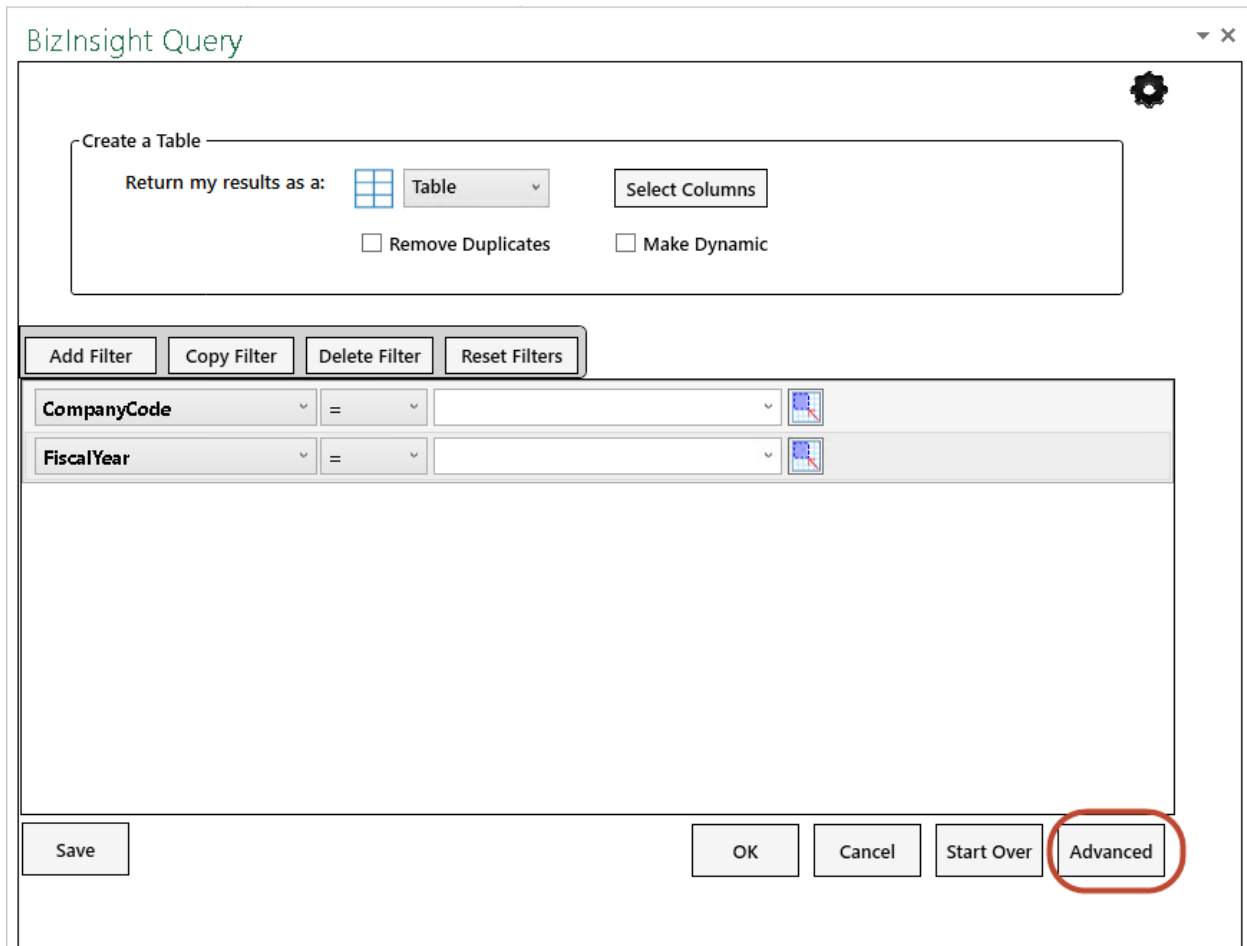
When the Make Dynamic checkbox is checked, BizInsight will automatically place the filter parameters in cell above the Table and update its Expression property to point to that cell.

| BNE | | | | |
|--|-------------|--------------|-------------|-----------|
| | 2015 | | | |
| | 1 | | | |
| @CompanyCode= 'BNE' @FiscalYear= '2015' (#[FiscalPeriod]= '1') | | | | |
| AccountDesc | Account | CreditAmount | DebitAmount | NetAmount |
| Due from BNC | 13091000000 | 0 | 717.16 | 717.16 |
| Investment in BNC | 18090000000 | 0 | 8887 | 8887 |
| Officers Comp-BizNet Ent | 50500000000 | -120816.8 | 150890.8 | 30074 |
| Income Tax Expense-BizNet Ent | 55000000000 | -27759.65 | 34669.65 | 6910 |

For more information, see “BizInsight Tables” in the User Guide.

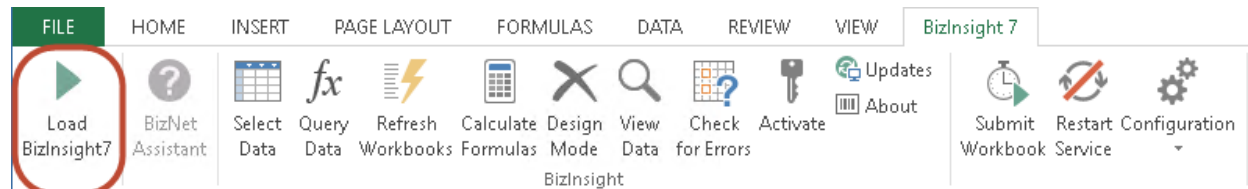
7. BizInsight Query Table Display Modes

When a pre-built Table object is dragged and dropped into an Excel worksheet, the Query Data dialog will display with a simpler interface (“Basic Mode”) since the object is known to be a Table. When in Basic Mode, users can switch to Advanced mode using the Advanced button in the bottom right corner of the BizInsight Query dialog. The Advanced mode is the default view when going directly to the BizInsight Query Data dialog from the **fx Query Data** button on the BizInsight ribbon.



8. Load On Demand

BizInsight has been changed to load only on request. This change was made to avoid conflicts with other applications that use Excel. To load BizInsight, users must click on the Load BizInsight7 button on the BizInsight ribbon.



9. Smart Data Engine Cache Management

The BizInsight Smart Data Engine significantly improves the refresh time to return data and the time to process the data into Excel. The increase in performance during the refresh of a workbook derives from a new cache control management process. The data returned is stored in memory on the local computer with a timestamp. When a workbook is refreshed, BizInsight checks the data timestamp to evaluate the last time the data was refreshed and determine whether it needs to be updated.

When BizInsight detects that the data cache needs to be updated, the refresh will use one of the following methods to retrieve data:

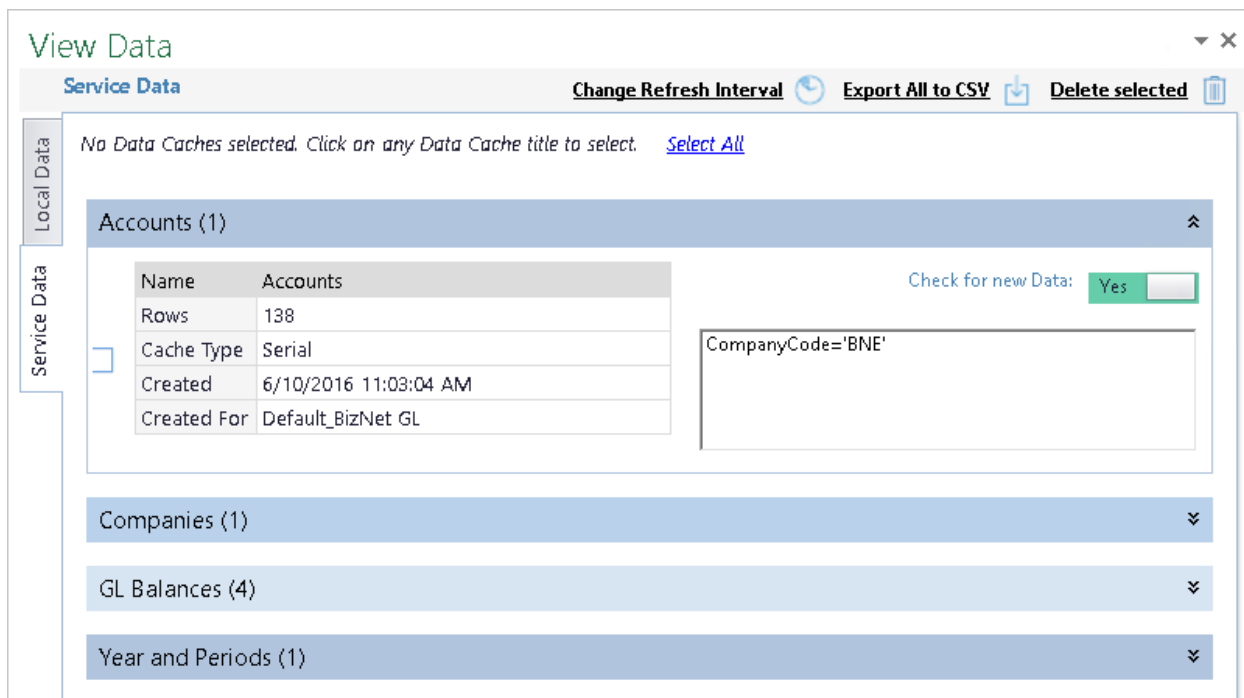
- Return only the new changes (the “delta”) between the data stored on the local computer and the ERP system, or
- Recreate the entire data cache.

Which method is used depends on the capabilities of the ERP system. For example, the Intacct Cloud ERP system contains a WHENMODIFIED status in some tables that can be used to identify the delta so the refresh can return only new data rows. Therefore, refreshes against Intacct Cloud will use the delta data retrieval method.

The Smart Data Engine incorporates a Serialized to Disk technology where cached data is transferred from memory to the local disk in the computer. When a user refreshes a workbook for the very first time, the caching service stores all data caches into memory. When the service is either stopped or restarted (which can be done manually or through a shutdown/restart of the user’s computer), the service converts the data caches and stores them on the disk; the next time the same data caches are requested in Excel, the serialized data is de-serialized into memory and the refresh of the workbook occurs within the computer. This technology ensures that data that has already been retrieved is preserved until the user wants it updated.

The View Data dialog has been redesigned to support the Smart Data Engine capabilities.

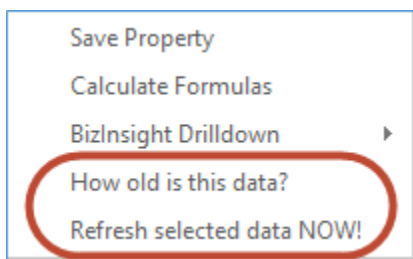
Each data cache is represented in the View Data dialog with information about the cache, such as creation timestamp, data type, and server-side filter values used for the cache. In addition, users have control at a data cache level over when BizInsight connects to and retrieves data from the ERP system using the Check for New Data toggle switch.



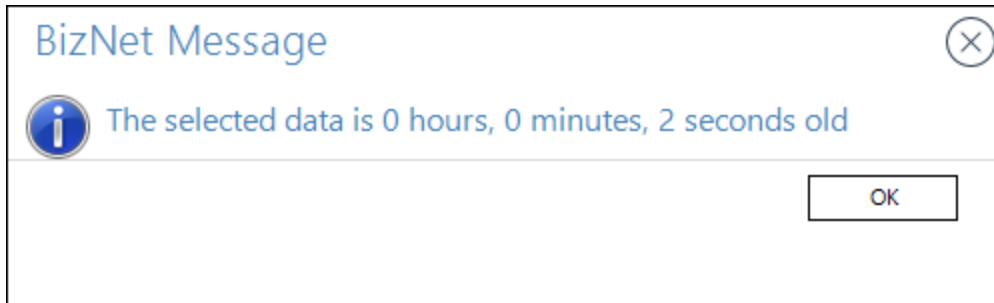
For more information on managing the data cache, refer to the “Data Caching” section of the BizInsight 7 User Guide.

10. New Data Cache Management Right-click options

Additional data cache management options have been added to the BizInsight function right-click menu:



The **How old is this data** option will tell the user how old the data cache is that was used for that function.



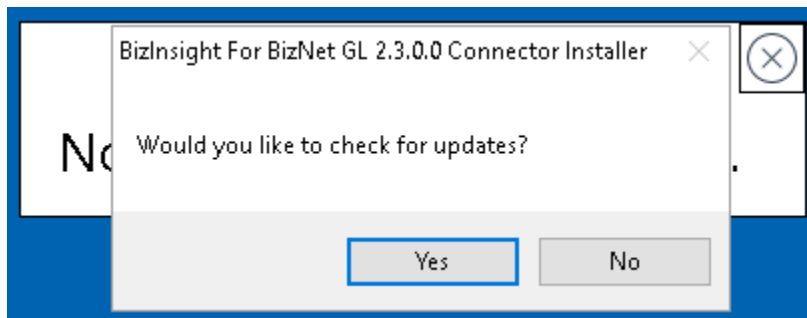
The **Refresh selected data NOW!** option gives the user the ability to refresh the specific data cache being used by the function that has been right-clicked.

For more information about these two options, refer to the “Data Caching” section of the BizInsight 7 User Guide.

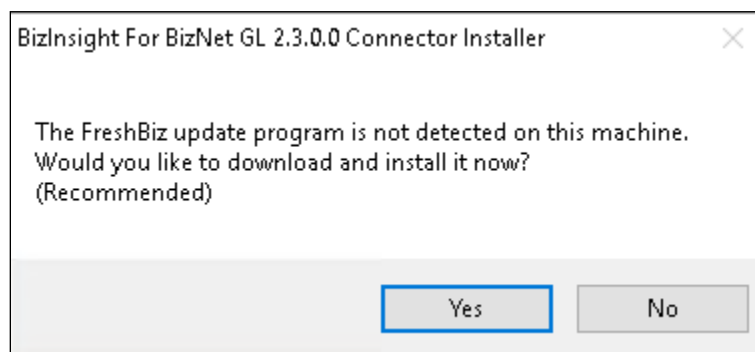
11. Check for Updates

The Content Installer has been updated to include the ability to check for and install product updates.

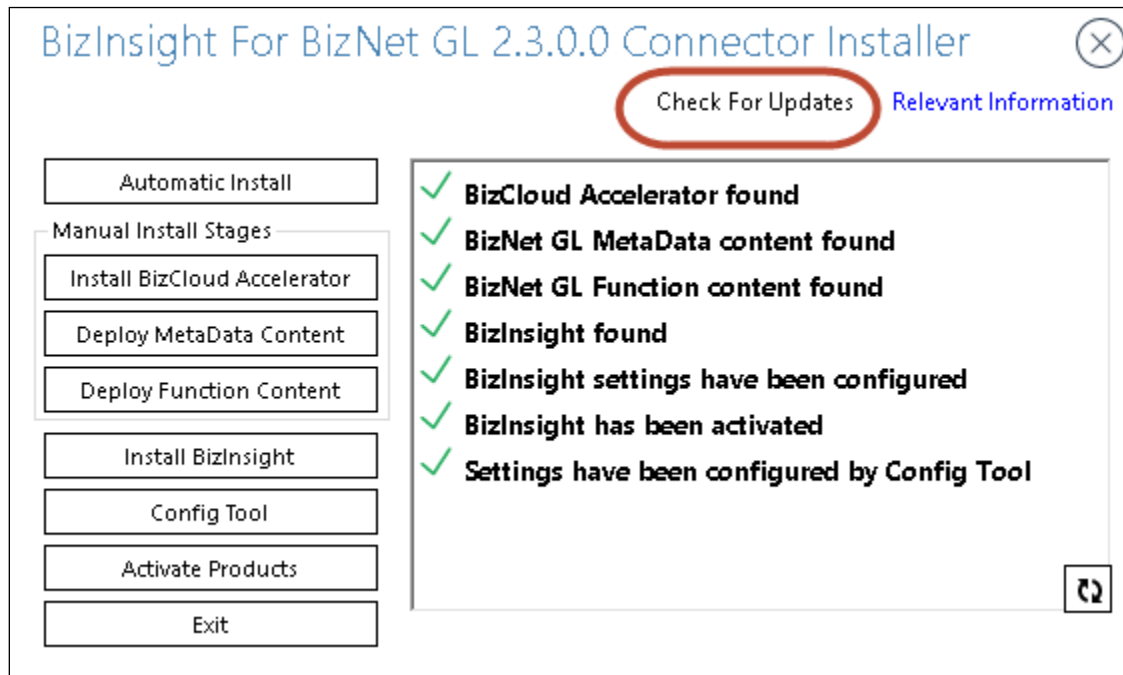
During installation, the Content Installer will prompt the user to check for updates.



The Check for Updates capability requires the installation of a supporting application called “FreshBiz”.



Users can initiate a Check for Updates by re-launching the Content Installer and clicking on the Check for Updates link.

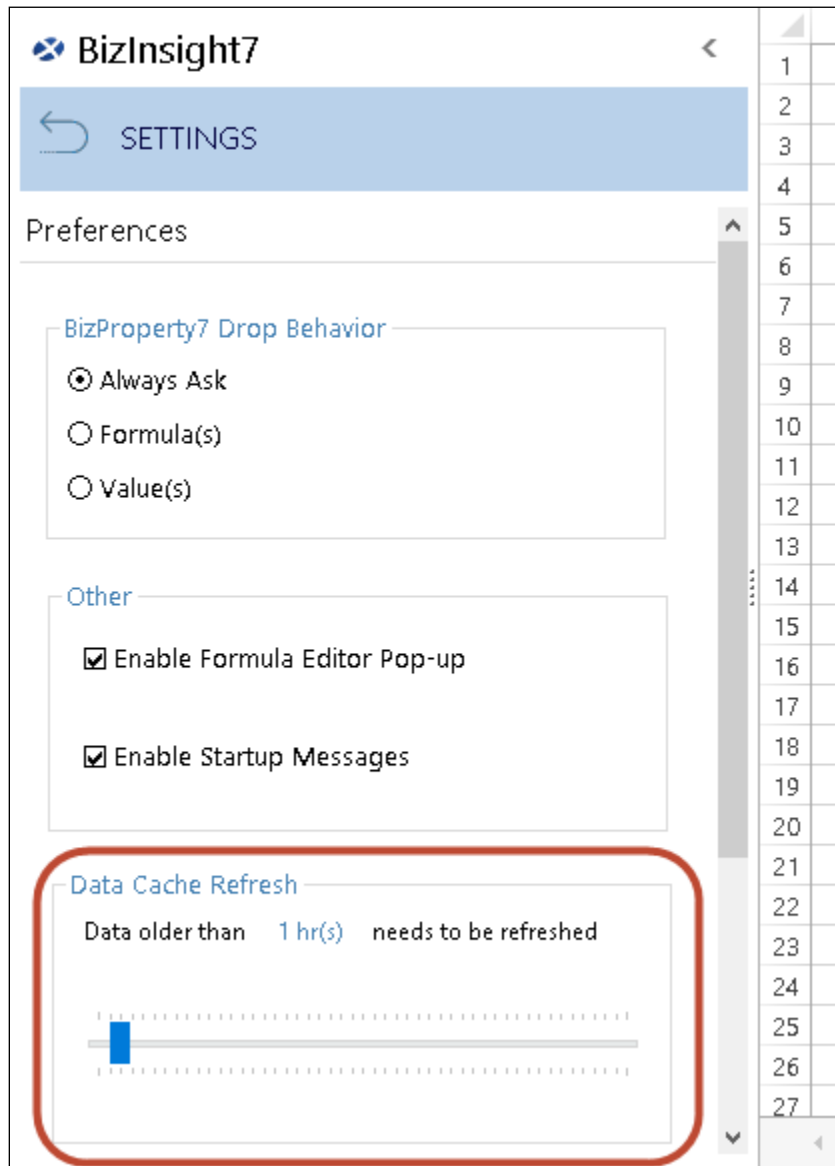


If updates are found, they will be installed automatically for the user. The existing installation will not need to be uninstalled in order to be updated.

II. Product Enhancements

1. Refresh Data Cache Interval

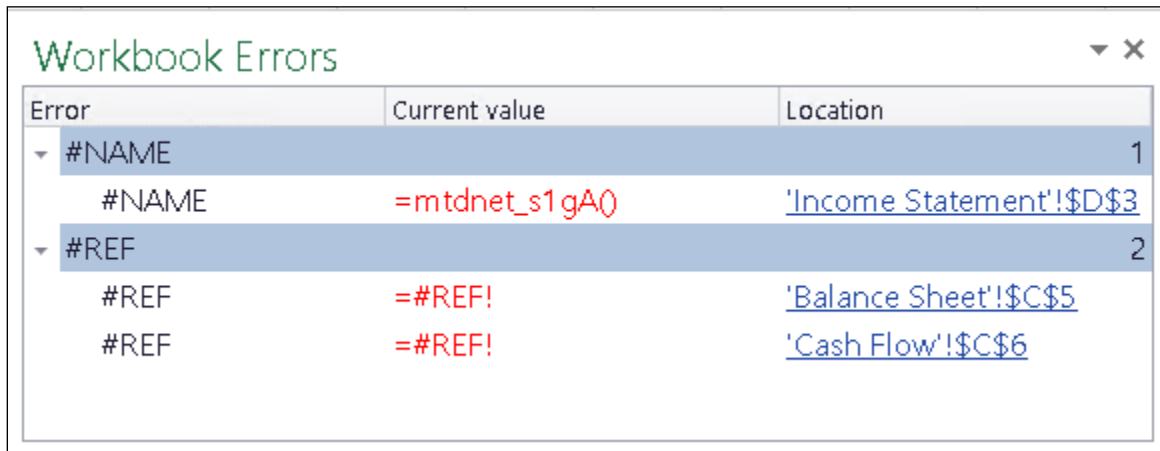
Users can control how long cached data is re-used by changing the **Data Cache Refresh** setting by going to Settings > Preferences in the Navigation Pane.



For more information about this option, refer to the “Data Caching” section of the BizInsight 7 User Guide.

2. Enhanced UI for Check for Errors

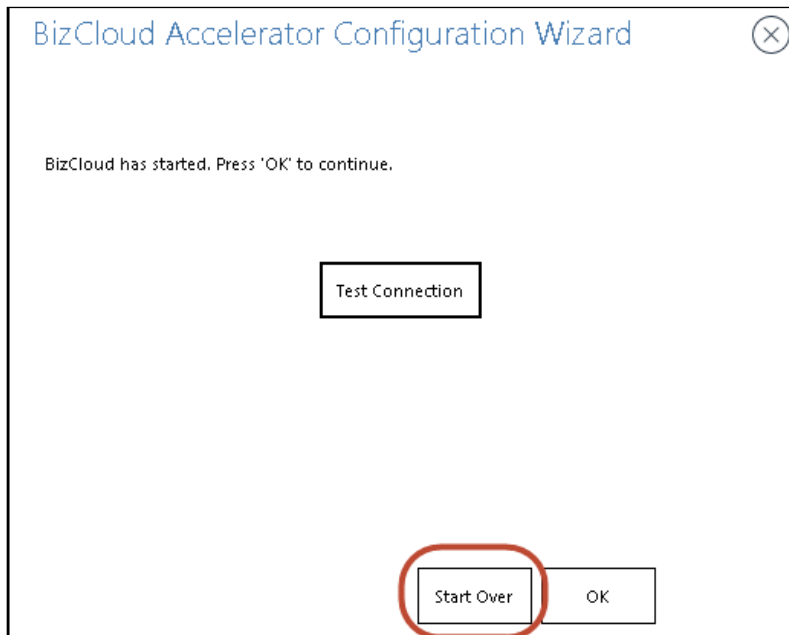
The Check for Errors feature has been enhanced to provide more information to the user about the cell in which an error is found:



| Error | Current value | Location |
|---------|---------------|---------------------------|
| ▼ #NAME | | 1 |
| #NAME | =mtdnet_s1gA0 | 'Income Statement'!\$D\$3 |
| ▼ #REF | | 2 |
| #REF | =#REF! | 'Balance Sheet'!\$C\$5 |
| #REF | =#REF! | 'Cash Flow'!\$C\$6 |

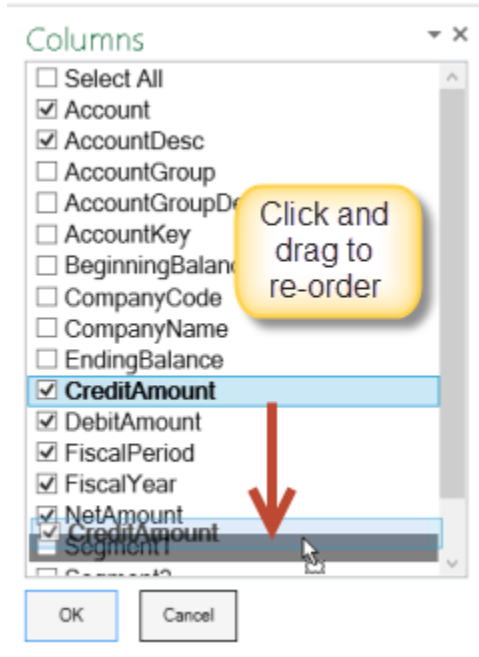
3. Start Over Button

The Content Installer has been enhanced to allow users to re-enter credentials after a Test Connection fails.



4. Select Columns Reorder

The Select Columns dialog has been enhanced to allow users to change the display order of columns when inserting Table objects. Columns can be dragged and dropped above or below other columns.



III. Issues Resolved

This release provides addresses issues found during the BETA release as well as those reported by the Intacct customer base.

1. CASE0000032048 – Takes a long time to refresh my Intacct workbooks.
Data retrieval from Intacct is significantly improved with the new cache management process.
2. CASE0000031826 – Design Mode does not stop data retrieval from Intacct.
3. CASE0000031786 – Report calculation hangs after data retrieved.
4. CASE0000032812 – Excel 2010 with XLL functions (non-SuperFunctions) return an error: The type initializer for 'BizNet.Content.Common.AddIn.BizContentAddIn'
5. Right-click Table Parameters – changes to the Remove Duplicates setting are applying successfully now.
6. CSV and Count Distinct functions against service data no longer return an Object Reference error.
7. LIKE statements using the wildcard (*) by itself works correctly.
8. When editing Tables, the BizInsight Query dialog has been improved to address issues displaying filter parameters for Tables built against Service Data caches, especially SuperTables.
9. Improved support for case sensitivity and special characters for Intacct database name and credentials.
10. BizInsight Query Data dialog not repopulating with filter parameters when editing an existing object.
11. The BizInsight Query dialog now handles a cell-referenced blank value when defining a filter parameter.

IV. Known Issues

1. Pivot table created with BizInsight are not refreshable.
2. BizInsight Desktop Edition requires unique column headers to build tables and SuperFunctions into cache. Users are required to rename duplicate column headers.
3. The Select Data capability requires users to be on the worksheet on which the data exists.
4. BizInsight Tables are automatically assigned Excel range names when created. Deleting the Table does not delete the assigned Excel range name and it will continue to display in the Select Data dialog until manually deleted.
5. In some tablet environments, or desktop environments that have text magnifier enabled (a display setting in Control Panel), BizInsight dialogs are not ideally sized and may have to be expanded to display all of their buttons. Once a user resizes a window, size selection will be preserved the next time the product is used.
6. Native Excel functions cannot be embedded in BizInsight Functions.
7. Editing local data cache column headers requires the data to be re-selected (using the **Select Data** button) in order for that data set to be usable by BizInsight Functions.
8. **Formula Modifiers with BizInsight Functions.**
Formula modifiers, such as “*-1”, that are used with BizInsight Functions will not be represented in the BizInsight Query dialog when the Function is being edited. The formula modifier will be included when the Function is inserted into a cell.
9. **Blank cells and Zeros**
Blank cells are considered a null value, not a zero. This should be kept in mind when building parameters that are looking for zero values. If you have a column of numbers that have empty cells, you will want to populate these cells with zeroes before building filter parameters that are looking for zeroes.
10. **Lotus Syntax**
The use of Lotus syntax in a BizInsight Function is not supported.
11. **Available Values Populate Only for “Default” Profile**
The list of available values that populate parameter fields comes from other data sources and additional API calls using the Default profile. This means that a user must manually type in their parameters or use cell referencing if using a non-default profile.

12. Missing Columns in BizInsight Query Data Dialog

Users can only filter on columns that are listed in the data source’s table schema.

13. Intacct Entities list brings back all parent locations

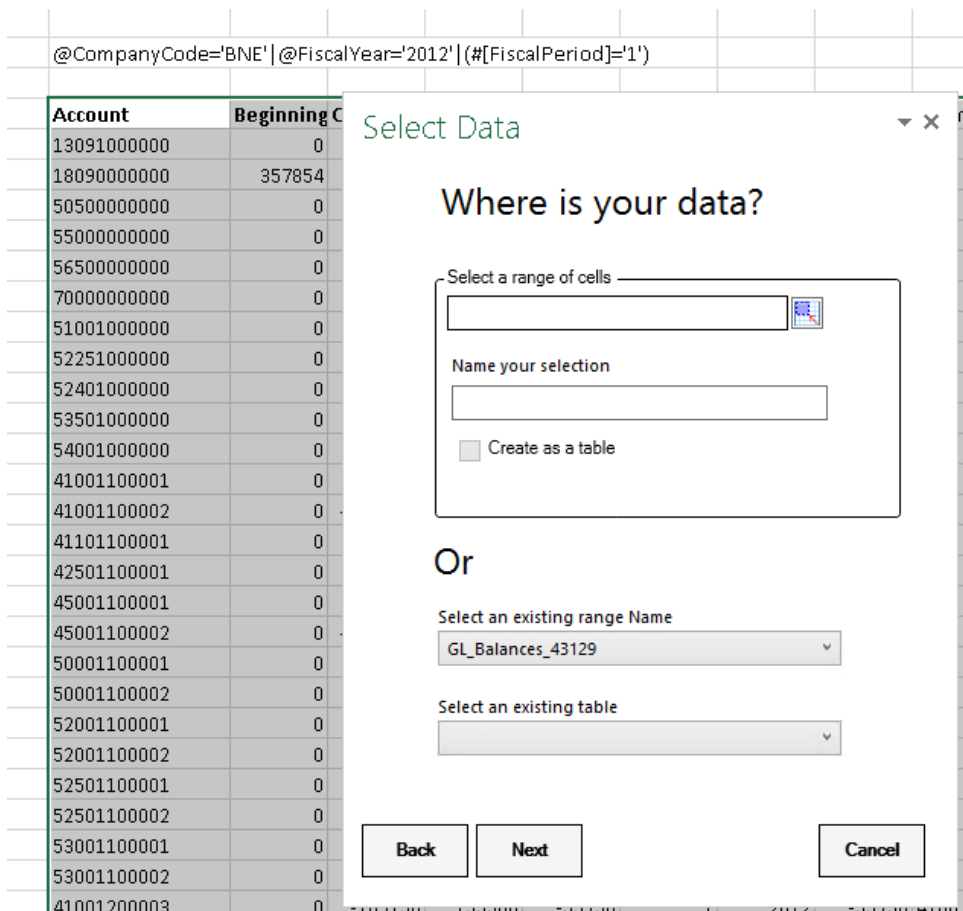
The entities list brings back all parent locations from Intacct, but not all parent locations are entities. Some data sources may return an error if they supply a parent location that isn’t an entity.

| Error |
|---|
| 10 is not a valid entity. Transaction should be owned by an entity and not by a sub-location. |

14. Filters Parameter Case Sensitivity

Values on required parameters are case sensitive. Values on non-required parameters are not case sensitive.

15. BizInsight 7 tables will not refresh with BizBroadcast 2.2.3. This issue is addressed in the soon to be released BizBroadcast version 2.3. The current workaround is to commit the BizInsight 7 table as an Excel cache which will be refreshed properly by BizBroadcast.



V. Best Practices

1. Using Selected Excel Data

The product requires that you have a unique name for your data. Utilize a unique Range Name or Table Name across all workbooks in a single Excel session.

The product works best when you do not alter the Worksheet Name, Range Name, or Table Name used when selecting the data (**Select Data** button). However, if you decide to change the Worksheet Name, Range Name, or Table Name, the easiest way to make sure your data is updated successfully is to add the data again using the **Select Data** button on the ribbon.

If you decide to change the Worksheet Name, Range Name, or Table Name and do not re-add the data using the Select Data option, here are the exceptions to data synchronization:

- Renaming a Table Name or Range Name will cause the Cell Address to be used in place of the original name. If the renamed Table Name or Range Name is resized on refresh, the data will not be available in BizInsight.
- Renaming a Worksheet Name and then setting focus to another Worksheet will allow BizInsight to locate the renamed Worksheet. However, if you fail to set focus to another Worksheet after renaming the Worksheet, updated data will not be available in BizInsight.

Re-naming a workbook will not cause data synchronization failures.

2. Use of Named Ranges or Cell Ranges vs. Tables

Selecting Excel tables for use as a data source (as opposed to a range of cells or a named range) is best practice. With tables, deleting a row or column from a table that has been selected with the **Select Data** button will update the selection of data seen by the product. This feature is not supported with cell ranges and only partially supported with the use of named ranges (for example, adding rows or columns to the outer edge of a named range is not supported).

3. Working with Dates, Times, and DateTimes

When working with data that is either a Date, Time, or DateTime data type, it is important for users to format the cells containing that data accordingly. Cells containing date values should be formatted as Date, cells containing time values should be formatted as Time, and cells containing a date and a time should be formatted with a custom format that contains both date and time (i.e. "mm/dd/yyyy hh:mm:ss AM/PM").